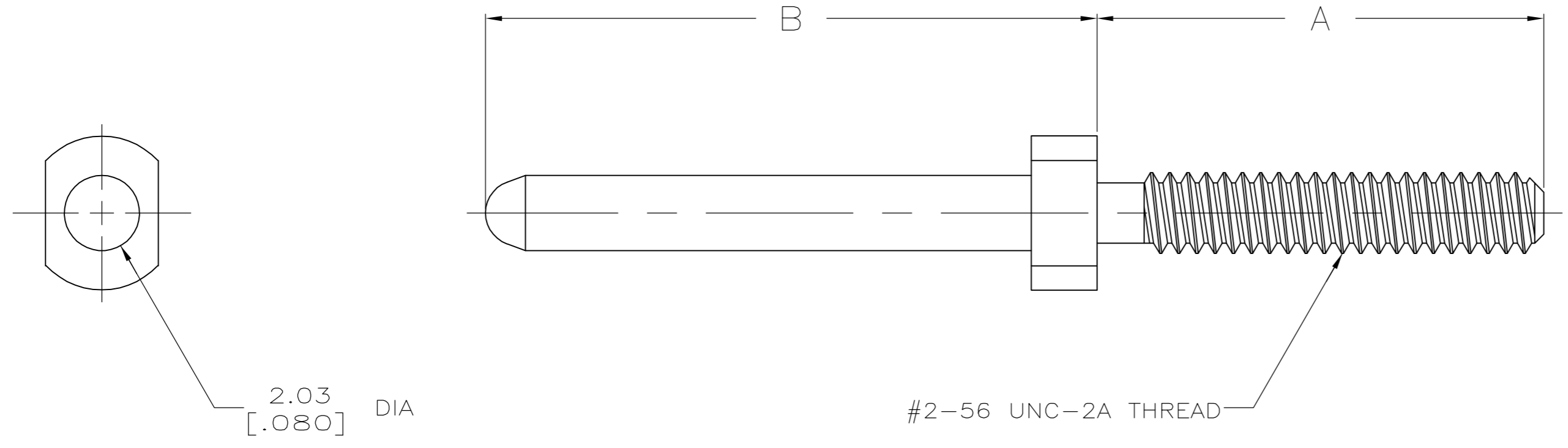


THIS DRAWING IS UNPUBLISHED. RELEASED FOR PUBLICATION
 © COPYRIGHT BY TYCO ELECTRONICS CORPORATION. ALL RIGHTS RESERVED.

LOC	DIST	REVISIONS			
P	LTR	DESCRIPTION	DATE	DWN	APVD
AD	25	D	REVISED PER EC 0512-0287-05	10DEC05	JDP AMS



- 1 MATERIAL: STAINLESS STEEL
- 2 FINISH: PASSIVATED

OBSOLETE	16.51	25.40	532807-6
	[.650]	[1.000]	
OBSOLETE	16.51	9.40	532807-5
	[.650]	[.370]	
OBSOLETE	16.51	15.49	532807-4
	[.650]	[.610]	
OBSOLETE	16.51	19.05	532807-3
	[.650]	[.750]	
	16.51	14.27	532807-2
	[.650]	[.562]	
	16.51	12.06	532807-1
	[.650]	[.475]	
	B	A	PART NUMBER

THIS DRAWING IS A CONTROLLED DOCUMENT.		DWN	R.K. SEIFRIED	05/30/90	 Tyco Electronics Corporation Harrisburg, PA 17105-3608	
DIMENSIONS:		CHK	J.D. WEARY	9/3/92		
mm [INCHES]		APVD	-	-		
		PRODUCT SPEC	-	-		
TOLERANCES UNLESS OTHERWISE SPECIFIED:		APPLICATION SPEC	-	-	NAME	HDI, GUIDE PIN
0 PLC	± -	WEIGHT	-	-	SIZE	A2
1 PLC	± -	CUSTOMER DRAWING	-	-	CAGE CODE	00779
2 PLC	± -	SCALE	8:1	SHEET	1 of 1	REV
3 PLC	± 0.13 [.005]	RESTRICTED TO	-	-	DRAWING NO	C=532807
4 PLC	± -					
ANGLES	± -					
MATERIAL	1					
FINISH	2					